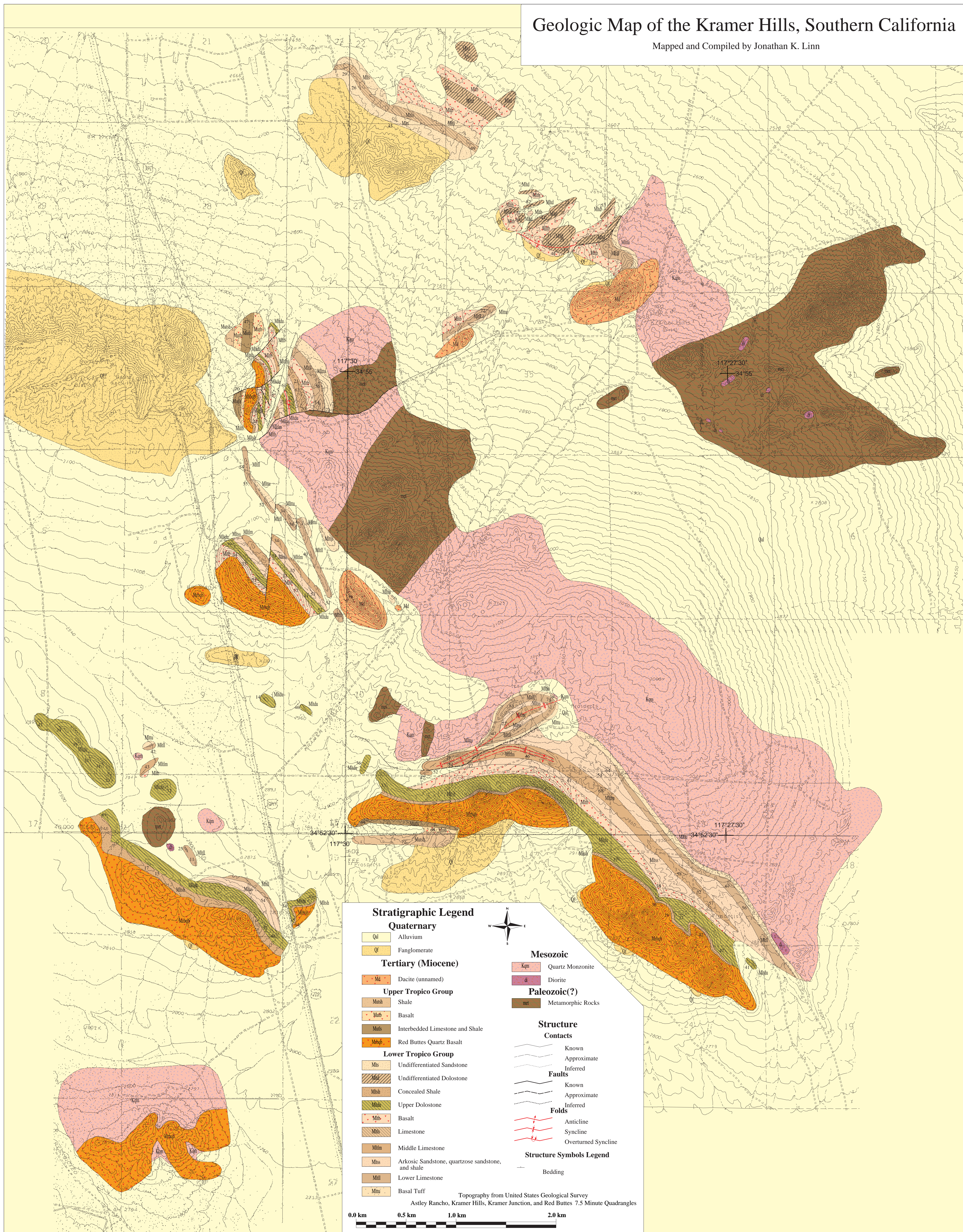


Geologic Map of the Kramer Hills, Southern California

Mapped and Compiled by Jonathan K. Linn



Stratigraphic Legend

Quaternary

- Qal Alluvium
- Qf Fanglomerate

Tertiary (Miocene)

- Md Dacite (unnamed)

Upper Tropic Group

- Mash Shale
- Mub Basalt
- Mals Interbedded Limestone and Shale
- Masp Red Buttes Quartz Basalt

Lower Tropic Group

- Mus Undifferentiated Sandstone
- Mud Undifferentiated Dolostone
- Msh Concealed Shale
- Mup Upper Dolostone
- Mub Basalt
- Mbl Limestone
- Mlm Middle Limestone
- Mms Arkosic Sandstone, quartzose sandstone, and shale
- Mll Lower Limestone
- Mtu Basal Tuff

Mesozoic

- Kqm Quartz Monzonite
- d Diorite

Paleozoic(?)

- met Metamorphic Rocks

Structure

Contacts

- Known
- Approximate
- Inferred

Faults

- Known
- Approximate
- Inferred

Folds

- Anticline
- Syncline
- Overtured Syncline

Structure Symbols Legend

- Bedding

Topography from United States Geological Survey
Astley Rancho, Kramer Hills, Kramer Junction, and Red Buttes 7.5 Minute Quadrangles

0.0 km 0.5 km 1.0 km 2.0 km