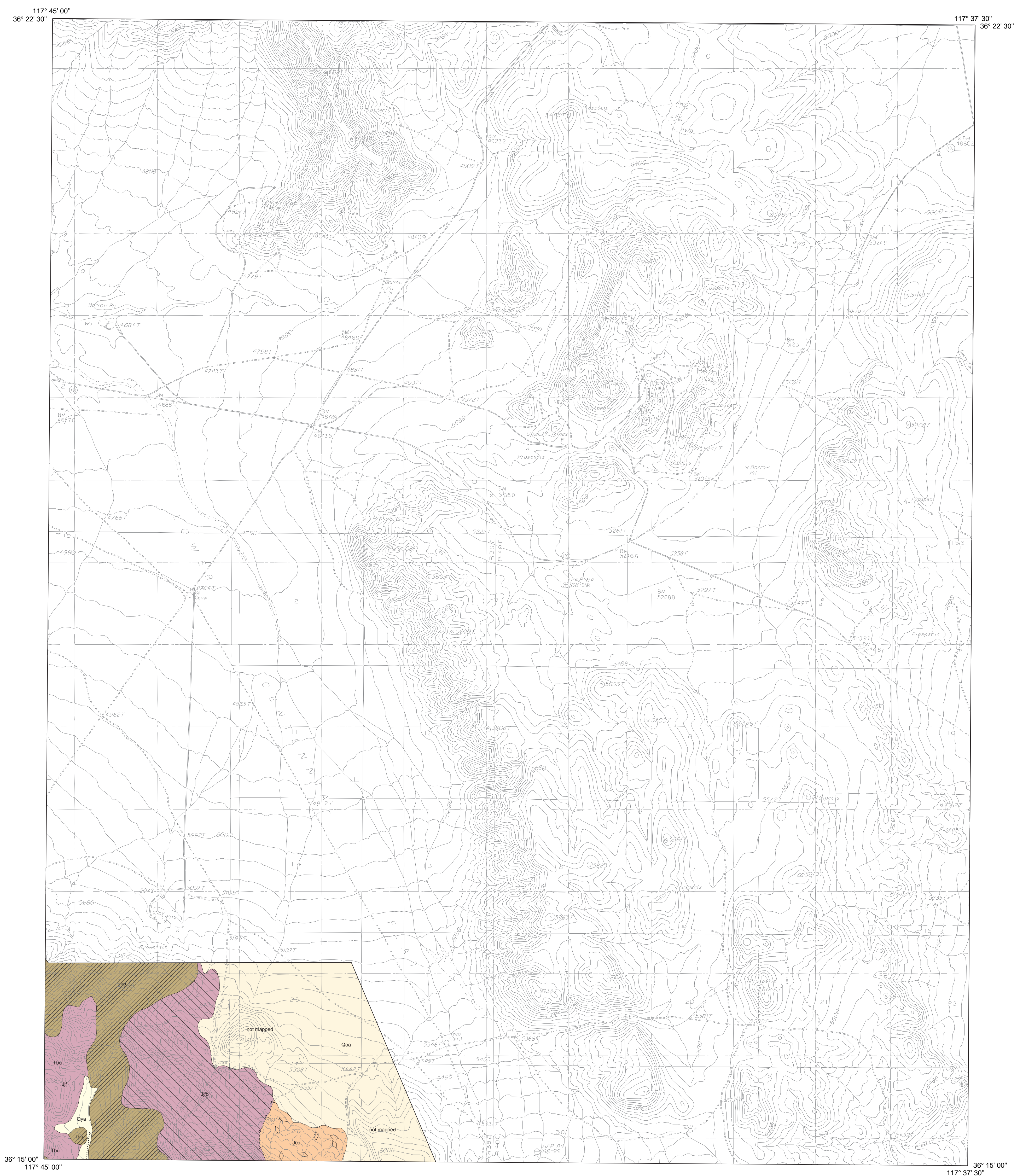


Talc City Hills quadrangle



EXPLANATION†

COVER UNITS		MAP SYMBOLS	
Quaternary	Qys Younger Alluvium*		Boundary of Quaternary rhythite within coeval synclastic de posit: tick marks face toward erupive center
	Qoa Older Alluvium*		Boundary of probable landslide: tick marks localized along base of slide block and face toward structural tip
	Tertiary	Tu Basalt of Upper Cenozoic Flat*	
Jurassic	Jf Joshua Flat Pluton, border facies (Granite) to (Quartz Monzo-diorite)		Fault contact: solid (known), dashed (approximate), dotted (inferred), general where conjectural. Ball and bar on down-dropped side of normal fault. Teeth on upper plate of thrust fault.
	Jf Joshua Flat Pluton (Granite)		Ductile shear (mylonite) zone
	Jcc Crystal Canyon Pluton (Alkali-felspar Quartz Syenite)		Intrusive or depositional contact: solid (known), dashed (approximate), short dash with query (inferred)
			Fold axis: syncline, anticline, doubly-plunging syncline
			Strike and dip of bedding plane: inclined
			Strike and dip of flow foliation: inclined, vertical
			Strike and dip of fault plane: inclined, w/ down-dip lineation, w/ horizontal lineation, w/ oblique lineation, subhorizontal lineation
			Strike and dip of fracture cleavage: inclined, vertical
			Strike and dip of joint plane: inclined, vertical
			Strike and dip of foliation/compositional layering: inclined, vertical, w/ down-dip lineation, w/ horizontal lineation, w/ oblique lineation
			Locality of sample used for radiometric age determination

† Units listed represent only the geologic column for this qua drangle. The geologic column for the entire Coso Range, including description of the radiometric ages cited here, is listed within the text file on this CD. Units highlighted with an asterisk (*) were defined and described by Duffield & Bacon (1981). Map symbols shown represent the complete set of symbols used in this study. Some of those illustrated may not be relevant to the geology of this particular quadrangle.

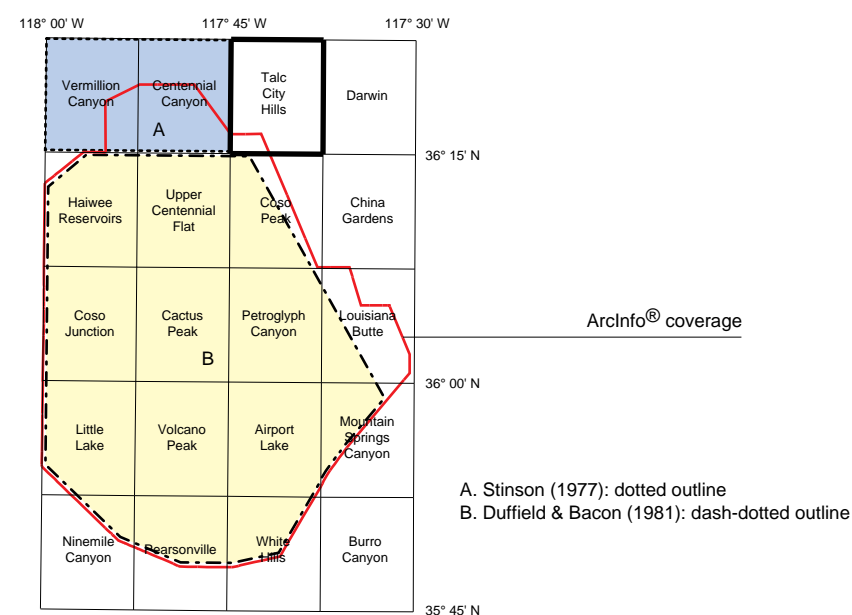
GEOLOGIC MAP OF THE TALC CITY HILLS 7.5' QUADRANGLE;
INYO COUNTY, CALIFORNIA

Compilation by Richard S. Whitmarsh
1997

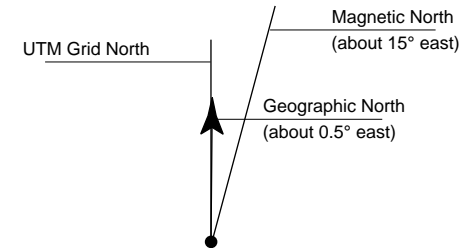
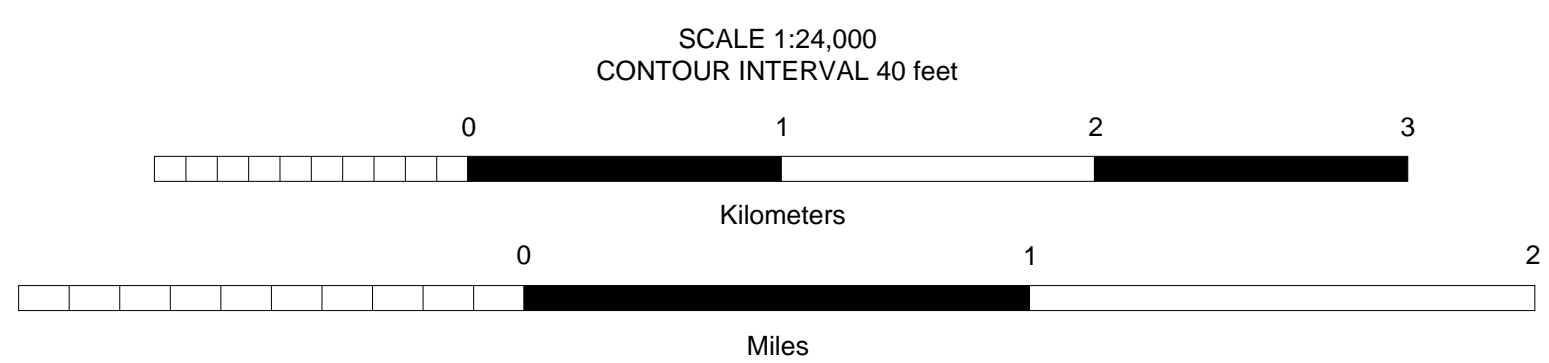
Total map area of Whitmarsh (see reference map) includes some contacts and unit labels established by Sinsion (1977) and Duffield & Bacon (1981). C contacts within the Cenozoic cover sequence either copied or adapted from Duffield & Bacon (1981). Structural data and contacts within the pre-Cenozoic basement complex, except w/ thin unit Mzb, established by Whitmarsh 1994-1996.

References Cited:

Duffield, W.A. and Bacon, C.R. 1981. Geologic map of the Coso volcanic field and adjacent areas, Inyo County, California. U.S.G.S. Miscellaneous Investigations Series, Map I-1200.
Sinsion, M.C. 1977. Geologic map and sections of the Keeler 15-minute quadrangle, Inyo County, California. California Division of Mines and Geology, Map S sheet 38.



Reference map with 7.5 minute quadrangle boundaries. Red line delineates boundary of Aciro coverage compiled by Whitmarsh during 1994-1997 at the University of Kansas. Department of Geology; Structural geology and GIS laboratory. Shaded areas (A and B) encompass portions of earlier geological maps containing contacts that have been included in this compilation. Bold black line highlights the locality and boundary of this quadrangle.



Topographic base: TALC CITY HILLS 7.5' QUADRANGLE (USGS, PRO VISIONAL EDITION 1987)