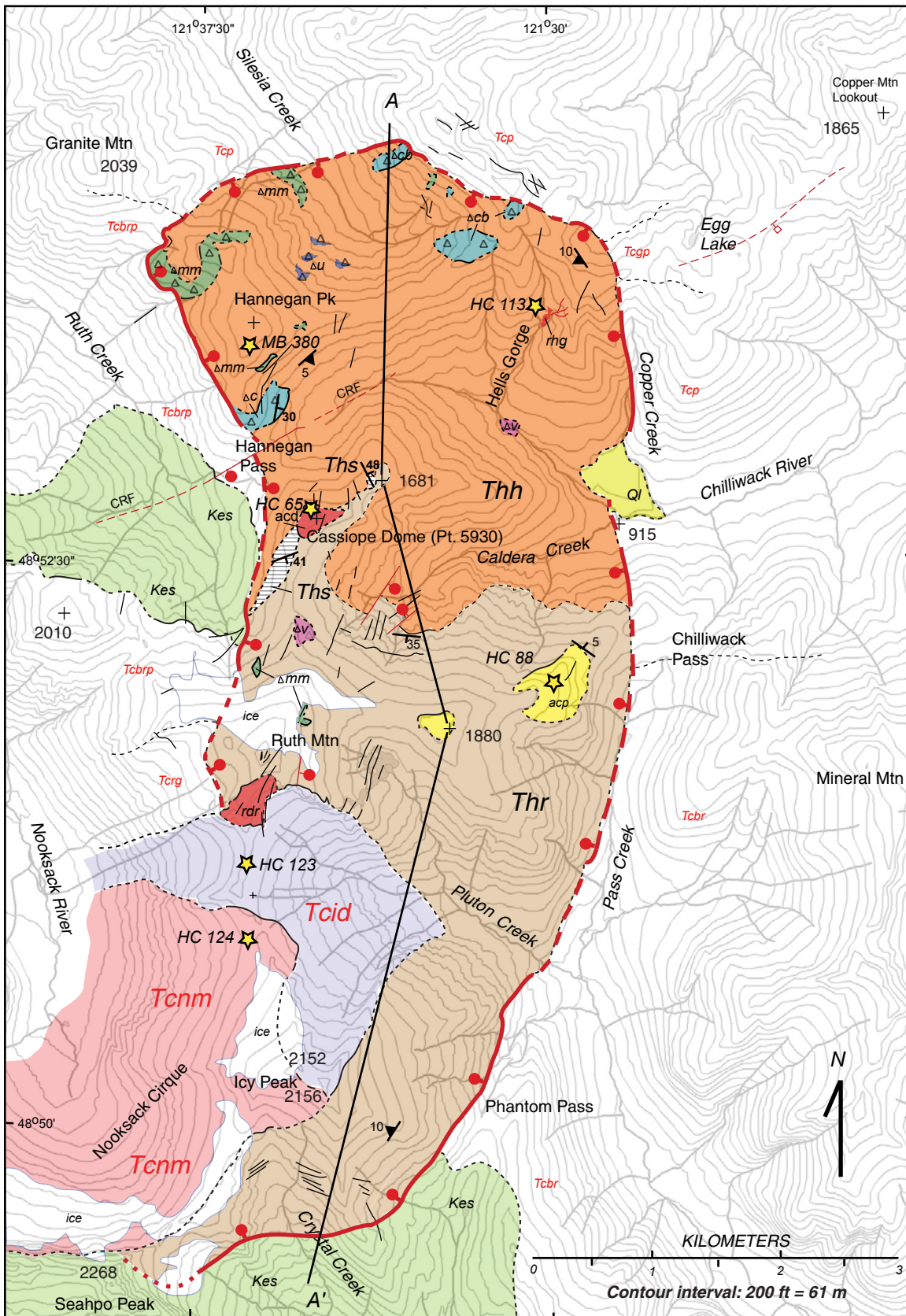


GEOLOGIC MAP OF THE 3.72 Ma HANNEGAN CALDERA AND ASSOCIATED ROCKS NORTH CASCADES, WASHINGTON, USA

LEGEND AND ROCK UNITS



- QUATERNARY**
- Ql landslide
 - glacier
- TERTIARY**
- PLIOCENE**
- CRF Chilliwack River Fault
- Post-collapse magmatic units*
- dikes, undifferentiated
 - acp: Andesite lava of Chilliwack Pass
 - Tcnm: Granite and quartz monzonite of Nooksack Cirque
 - Tcid: Quartz diorite and quartz monzonite of Icy Peak
- Intrusive pods and domes:**
- rdr: Rhyodacite of Ruth Mt;
 - rhg: Rhyolite of Hell's Gorge
 - acd: Andesite of Cassiope dome
- Intracaldera monolithologic breccia**
- Δ mm schist facies
 - Δ cb Chilliwack batholith rocks
 - Δ v pre-caldera volcanic rocks
 - Δ u undifferentiated rocks
- Chilliwack composite batholith plutons with contacts as per Tabor et al., 2003 (no pattern):**
- Top, Pocket peak phase (Olig.)
 - Tcbrp, Price Gl. pluton (age?)
 - Tcbr, Baker R. phase (Olig)
 - Tcrgd, Ruth Ck pluton (Mio.)
 - Tcrg, Granite of Ruth Mt (Plio?)
 - Tcgp, Granite porph. of Egg Lk (Plio)
- MESOZOIC**
- Kes: schist facies of Darrington Phyllite member of Shuksan Metamorphic Suite
- contact, dashed where inferred
- 41
5 strike and dip of bedding or flow foliation
- fault; ball on downthrown block
- dated samples with number. See text

David S. Tucker
2006



Geology Department
Western Washington University
Bellingham, Washington, USA