

# Geologic Map of the Wilson Cliffs, Potosi Mountain Area, Nevada

Geology by: B.C. Burchfiel, C.S. Cameron, L.H. Royden

## Explanation

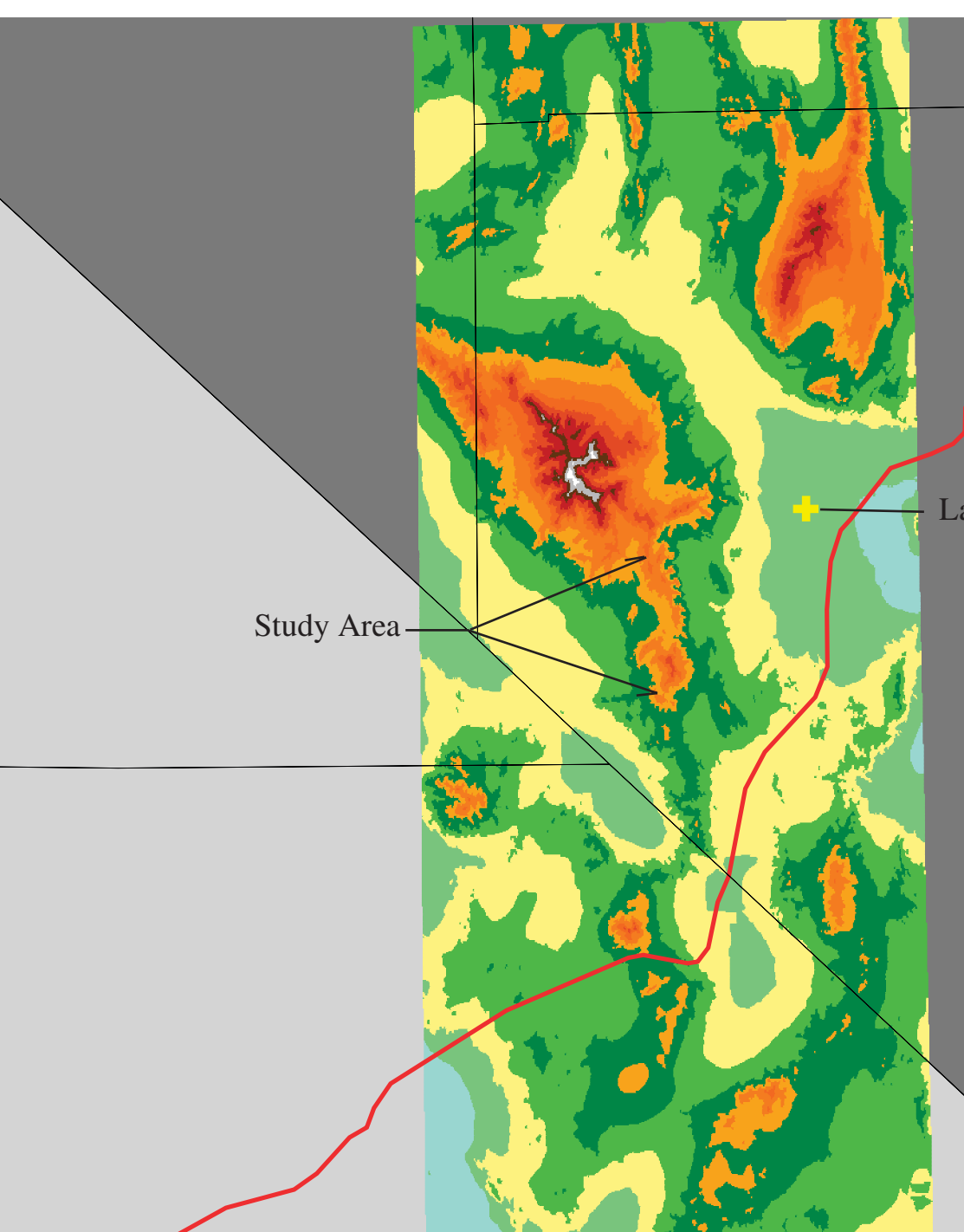
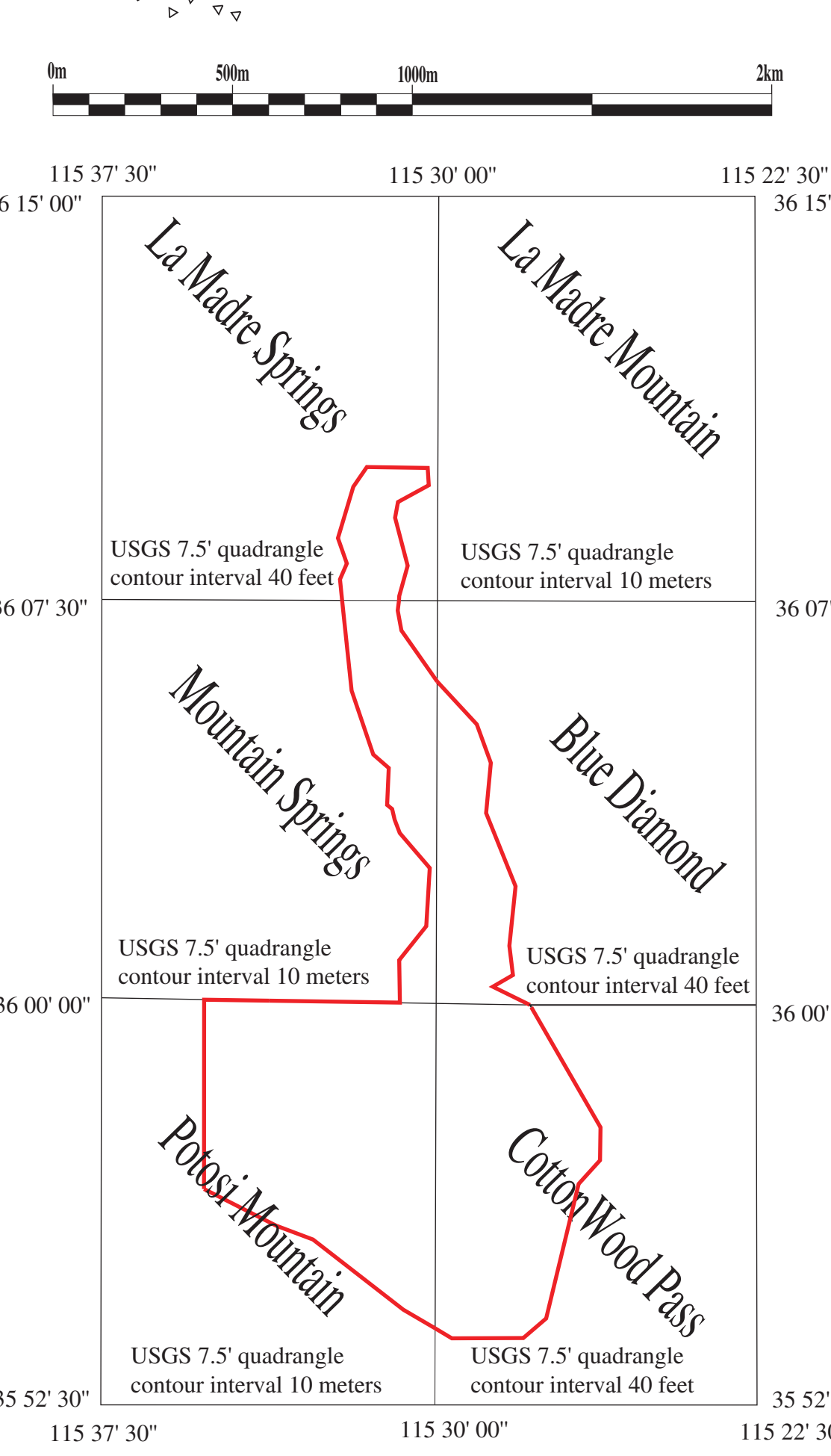
**Contacts**  
 Definite, approximate, approximate queried, inferred or concealed.  
 Key units.  
**Faults**  
 Thrust Fault: definite, approximate, approximate queried, inferred or concealed.  
 Bedding plane fault or low angle fault: definite, approximate, approximate queried, inferred or concealed.  
 High angle fault: arrows indicate slip where known; ball on downthrown block where only separation is known.  
 Contact at the base of gravity slide masses.

**Attitudes**  
 Inclined, overturned, vertical, and horizontal.

**Folds**  
 Axial traces of anticline, syncline, overturned anticline, overturned syncline, showing plunge.

**Breccia**

Quaternary	Qa	Alluvium
Tertiary	Tl	Landslide Deposits
Jurassic	Jc	Chapel Conglomerates
	Ja	Aztec Sandstone
	Jc	Chalk Formation
Triassic	Trs	Shinarump Conglomerate
	Trm	Mesquite Formation
Pennsylvanian-Permian	P	Katib Formation
	MPs	Bird Spring Formation
	MS	Indian Spring Member
	More Cross Limestone	
	My	Yellotype Member
Mississippian	Mm	Billion Member
	Ma	Ancker Member
	Md	Dana Member
	Ds	Saltan Limestone
Devonian	Ds	Inside Member
	Oms	Mountain Springs Formation
Ordovician	Cn	Nephi Formation
	Clu	Dunderberg Shale Formation
Cambrian	VII	Bonanza King VII
	VI	Bonanza King VI
	V	Bonanza King Unit V
	IV	Bonanza King Unit IV
	III	Bonanza King Unit III
	II	Bonanza King Unit II
	I	Bonanza King Unit I
	CBal	Bonanza King Lower



This map has been digitally treated by Aaron Ferris, University of Kansas, Department of Geology, GIS Laboratory.

